



Are you looking for preschool, day care, after school care or a childminder in your neighbourhood?

Have a look at the "Landelijk Register Kinderopvang (LRK)" at www.landelijkregisterkinderopvang.nl and search for the municipality of "De Fryske Marren". Here you will find all organizations in compliance with Dutch childcare laws.

Where can I find daycare for my child?

Want to know more?

Ask your questions at a childcare centre, a counselling centre or visit the municipalities website.

GGD Fryslân (consultation office)
Tel. 088 – 22 99 444
www.ggdfryslan.nl

Childcare centres
www.landelijkregisterkinderopvang.nl

Tax and Customs Administration
Tel. 0800 - 0543 (free of charge)
www.belastingdienst.nl/toeslagen

Municipality De Fryske Marren
Tel. 14 05 14
www.defryskemarren/kinderopvang
info@defryskemarren.nl



DE FRYSKE MARREN



DE FRYSKE MARREN

DAYCARE FOR YOUR CHILD

Playing with other kids is beneficial for the development of your child. By playing together, children realize they can help each other. These are the first steps towards friendship. In daycare, your child can play together with peers. Children also learn how to interact with others, to wait for their turn, to work together and how to be considerate of each other.

Day-care and after-school care

This is your child's day care while you are for example at work or following a course. This can be possible during school hours (daycare) but also after school hours (after school care). Day care and after school care is available for children from age zero until secondary school.

Where can I go?

- **Childcare centre**
 - Daycare is at a location near you
 - Children are supervised by pedagogically trained employees
- **Childminders**
 - Small scale daycare
 - Daycare is at the host's home
 - The childminders are part of a childminding agency

How much does it cost?

The costs are different for everyone and depend on:

1. **The price a daycare centre charges:**
 - Daycares determine the hourly rate every year.
2. **The part the government reimburses:**
 - Single parents or parents that both work, study, are following a reintegration programme or a civic integration course are entitled to childcare benefits. How much this is exactly depends on your income.
 - Would you like to know if you are entitled to these benefits? And if so, how much this would be? Please go to www.belastingdienst.nl and make trial calculation.
3. **Own contribution:**
 - Parents always pay a personal contribution. This contribution is the remaining cost after deduction of the childcare benefits.
 - Do you receive benefits and are you (both) following a reintegration programme or civic integration course? In this case you may possibly receive compensation from the municipality. Visit www.defryskemarren.nl/kinderopvang for available options and application form.



Care for toddlers

Once your child turns two, it's called a toddler. Your toddler may attend toddler care for 2 partial days a week. Here your child will play together with peers aged 2 to 4 and is prepared for primary school.

Where can I go?

- **Toddler/childcare centres:**
 - Daycare is at a location near you
 - Children are supervised by pedagogically trained employees

How much will it cost?

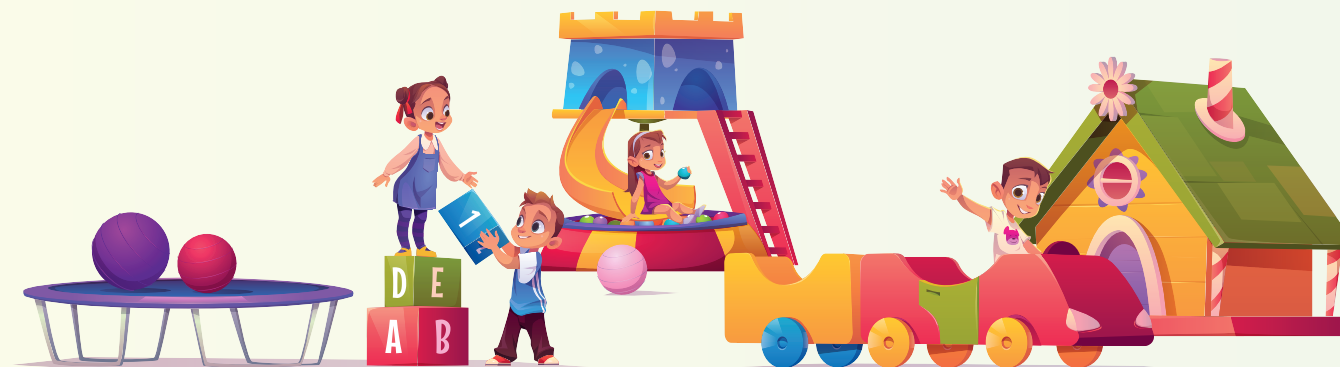
The costs of Toddler/childcare are the same as regular childcare for parents that are entitled to childcare benefits.

If you are not eligible for childcare allowance, than toddler care can be covered by local municipality for maximum of two partial days (a week)? You will pay a contribution depending on your income.

Social medical Indication (SMI)

In special circumstances for social, medical or psychological reasons, you may be eligible for additional allowances from your municipality. This is possible until your child starts secondary school.

For more information on SMI, check the website or contact the "Sociaal Wijkteam Jeugd en Gezin".



VVE - extra (language) support

VVE is short for Early childhood education: a programme for children aged 2-4 and 4-6 years. It focusses on playing with other children and being introduced to the Dutch language and new words.

Who is this extra (language) support for?

The aim is for all children to have a good start at primary school. Many children may benefit from some additional support. If this applies to your child, you will be notified by the consultation office. Your child will then receive a VVE-indication.

With a VVE-indication, there is more time to play and learn because your child can attend day care for 4 partial days. As a parent, you will be involved in your child's development.

Where can I go?

Check with the consultation office or local day care provider. Not every toddler/day care location offers VVE.

Is your preferred location not a VVE location? Then you can consult with the consultation office or your local day care provider to find a solution.

How much does this extra (language) support cost?

The two extra partial days are free of charge from 1 January 2023.

